



2009-2010 GMT Quarterly Report for District (or Undistricted) **District 31 G**

GMT: **CARL HARRELL**

Location: **NORTH CAROLINA**

GMT CA: **1**

CLUBS

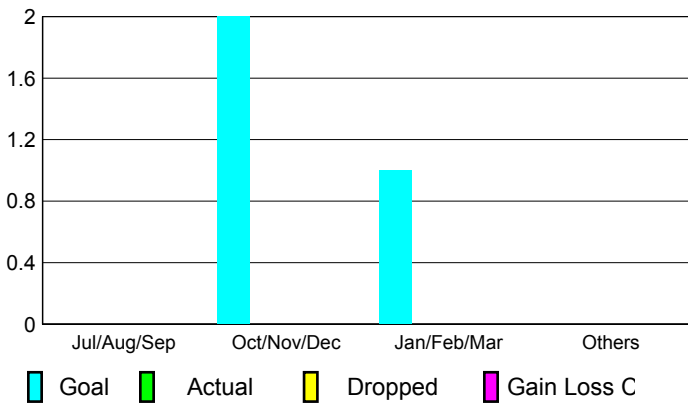
Club Results
2009-2010

Clubs
2008-2009

| Month | New Club Goal | Actual New Clubs | Actual Dropped Clubs | Gain/Loss of Clubs | Gain/Loss of Clubs |
|---------------|---------------|------------------|----------------------|--------------------|--------------------|
| Jul/Aug/Sep | 0 | 0 | 0 | 0 | 1 |
| Oct/Nov/Dec | 2 | 0 | 0 | 0 | 0 |
| Jan/Feb/Mar | 1 | 0 | 0 | 0 | 0 |
| Apr/May/June | 0 | 0 | 0 | 0 | 1 |
| Totals | 3 | 0 | 0 | 0 | 2 |

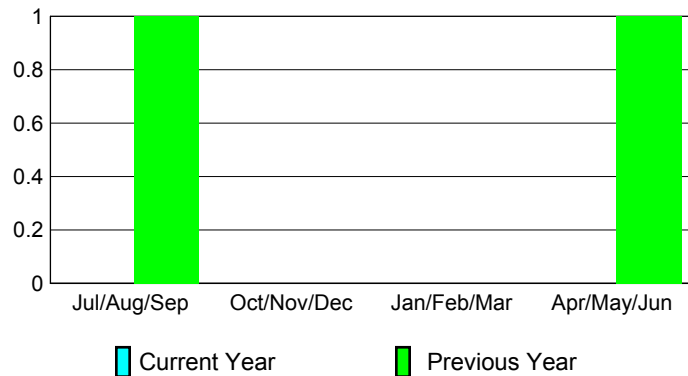
Club Results 2009-2010

Goal, New, Dropped, Gain/Loss



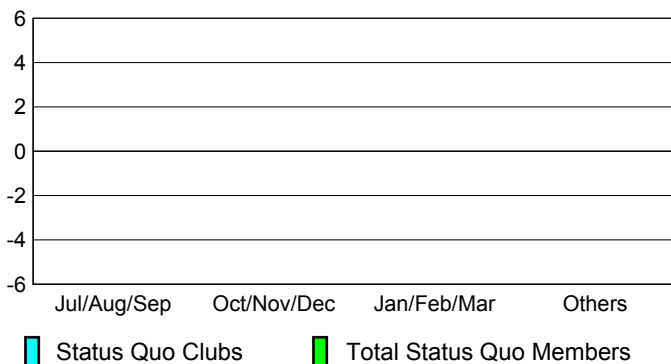
Comparison of Club Gain/Loss

Current Year Compared to the Previous Year



YTD Status Quo Clubs 2009-2010

Status Quo Clubs Compared to Status Quo Members



MEMBERSHIP

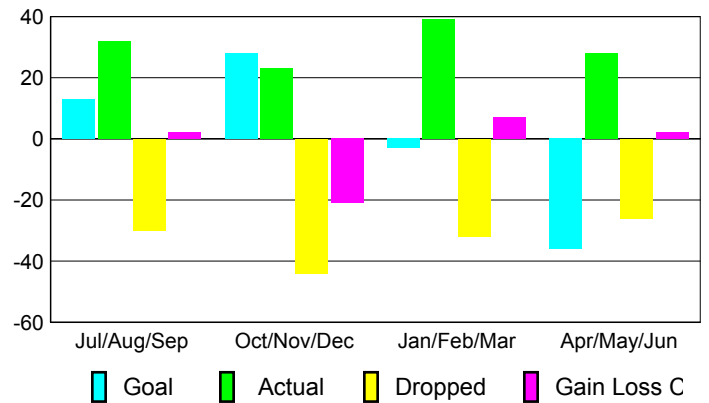
Membership Results
2009-2010

Membership
2008-2009

| Month | Net Memb Goal | Actual New Memb | Actual Dropped Memb | Gain/Loss of Memb | Gain/Loss of Memb |
|---------------|---------------|-----------------|---------------------|-------------------|-------------------|
| Jul/Aug/Sep | 13 | 32 | -30 | 2 | 21 |
| Oct/Nov/Dec | 28 | 23 | -44 | -21 | 5 |
| Jan/Feb/Mar | -3 | 39 | -32 | 7 | -9 |
| Apr/May/June | -36 | 28 | -26 | 2 | 7 |
| Totals | 2 | 122 | -132 | -10 | 24 |

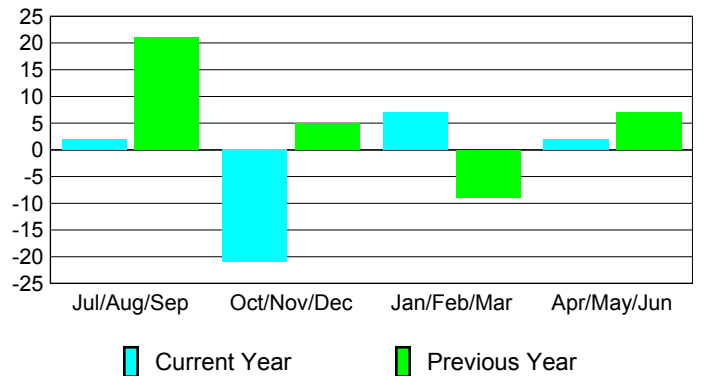
Membership Results 2009-2010

Goal, New, Dropped, Gain/Loss

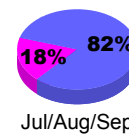


Comparison of Membership Gain/Loss

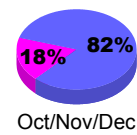
Current Year Compared to the Previous Year



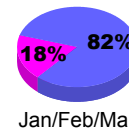
Gender Comparison 2009-2010



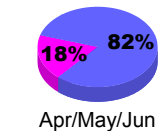
Jul/Aug/Sep



Oct/Nov/Dec



Jan/Feb/Mar



Apr/May/June

Male

Female